

SPUDNEWS

SPUD's Charity Newsletter



We're back!

After what has seemed a very long winter and difficult time for everyone, we are delighted to be open again and welcoming people back to our gallery and workshops.

We've been busy freshening up the building, putting together an exciting and varied exhibition programme and welcoming new creatives too.

As we re-open we will be doing everything to ensure you are welcomed back safely and we very much look forward to seeing you soon.

IN THIS ISSUE

SPUDYOUTH: TOKYO

NEW FOREST IMAGINARIUM

LIVING ROOM: DEMENTIA SPACE

EXHIBITION PROGRAMME

+ MUCH MORE...

Exhibition Programme

We've put together a packed and varied exhibition programme from 1st June through until Christmas, including exhibitions by local painter Penny Lamprell (work will be for sale) and an intriguing, interactive exhibition from artists Tony Spencer and Terence Noble. We will also be showcasing work from Artful Creative as part of Hampshire Open Studios in August and creatives from our Graduate Launch Pad in November. All our exhibitions are free – opening days and times may vary so please do check the website at:

www.spud.org.uk/virtual-gallery



SPUD NEEDS YOU!

We are actively searching for willing individuals to form a team of volunteers. As a small charity sometimes we could really benefit from a little extra help.

Anything from helping us run our annual events to coming in and working along side us in the office. There's a huge variety of ways you could choose to be involved -->

tom@spud.org.uk

spudYOUTH: TOKYO

spudYOUTH goes international in 2021 with a brand-new collaboration with Daikanyama Teens in Tokyo.

This will be an incredible opportunity for young people interested in Architecture and Design to take part in a cultural exchange project, culminating in exhibitions in both countries.

Participants will also have an opportunity to take part in a trip to Tokyo in February 2021.

To find out more go to:

www.spud.org.uk/spudyouth-tokyo

The project has been made possible with the kind support of the Daiwa Foundation and the GB Sasakawa Foundation.



SPUD SOCIAL NETWORK

For More information on what we are up to please keep an eye on SPUD.ORG.UK Social media pages.



@spud.org.uk

Art Angels

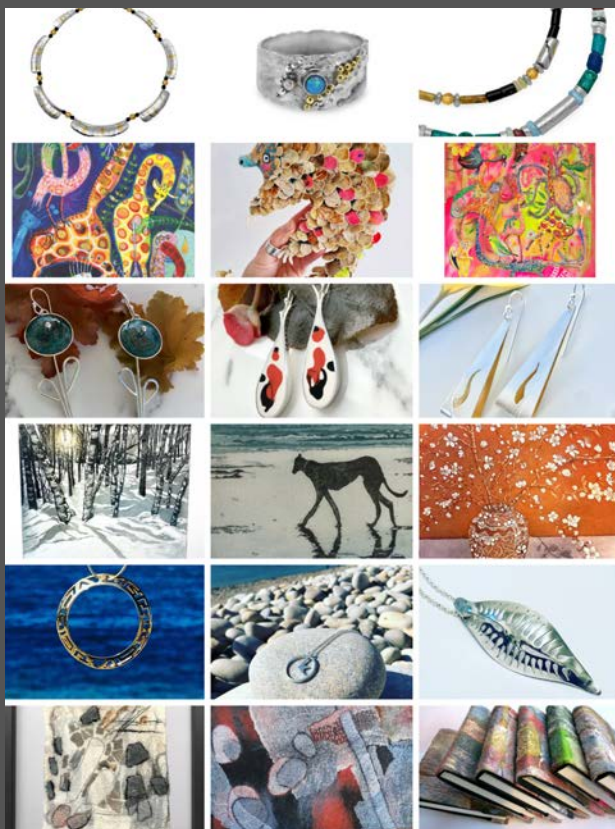
The all-female team, known as the Art Angels, will be taking over the front workshop space at spudWORKS (formerly Janet Kirk Florist) and running a fantastic series of workshops and short courses for all levels of ages and abilities.

If you are just a beginner or an experienced artist, there will be something for you to discover. Everything from painting, print, ceramics and jewellery making will be on offer. Workshops will be run for small numbers and always in a Covid safe environment.

To find out more and book a workshop go to: www.artangelsnewforest.co.uk



Hampshire Open Studios: 21st – 30th August



We are delighted to be part of Hampshire Open Studios this year and will be opening our doors in August to welcome the Artful Collective in our Gallery space, along with opportunities to drop in on the Art Angels, our studio artists and Graduate Launch Pad creatives. There will be so much to see and do and it's all free. We also have a beautiful garden for you to enjoy!

Full details at:

www.spud.org.uk/whats-on or

www.hampshireopenstudios.org.uk

Graduate Launchpad



Our Graduate Launch pad has welcomed two more graduates this month: Anya Bliss, BA Fine Art graduate and Christian Murphy, MA Architecture and international student from Detroit, USA. Both creatives will be joining current graduate Maddie Collymore (Fine Art) for the next 12 months at spudWORKS and using the space to develop their practice and collaborate with others.

The next available space will be August 2021 – to apply go to:

www.spud.org.uk/launchpad

The space is generously funded by Utilita energy company.

Powered by

utilita 
life with power

WORKSHOP SPACE FOR HIRE

Starting from January 2021 we will be offering our newly improved workshop space for hire.

Available for **ONLY £10 per hour!**

Facilitating everything from life drawing classes to craft workshops and all sorts of other creative activities. Get in touch to find out more!

Contact: tom@spud.org.uk

Artist Residencies



Located alongside our new art studios at spudWORKS the residency space provides a dedicated live-work space. It is open to artists of any discipline in need of a concentrated period of time to develop their ideas.

It is approximately 23 square metres (247sqft) with heating, electricity, TV and superfast broadband. It has its own entrance offering access 7 days per week. The studio has a fold-down double bed, desk and storage with a shared toilet and wash-up facilities. Artists also have access to a basic kitchen, shower and other facilities in the main building. There will be opportunities for socially engaged artists to work with local communities to develop their work and also potentially to show work resulting from the residency in the gallery at spudWORKS.



The cost of the space for a self-funded residency is £125 per week payable in advance plus a one-off £50 administration fee. If you are interested in a self-funded residency please go to: www.spud.org.uk/artists-residencies-programme and download the application form.

Kickstarter

SPUD has become the first organisation in the New Forest to take on a Kickstarter apprentice. This is a government supported scheme to give young people routes into work and to help them build their skills, CV/s and confidence. We've been very pleased to welcome Seth Horton to our team. Seth is working on graphics, website and social media content for us and he's already becoming an invaluable asset.



spudYOUTH: Lymington High Street

FUTURE HIGH STREET

As the country re-opens from lockdown our high streets, shops and businesses have all been affected. Lymington High Street has been impacted too. But what do young people think? How will town look post-Covid? What opportunities do these changes present?

Now is the time for young people to have their voices heard. spudYOUTH is creating an exciting summer workshop in Lymington to allow young people to share their ideas, and learn new skills.

To register your interest in this FREE project go to:
www.spud.org.uk/spudyouth

As we emerge from lockdown it is clear many of our High Streets have suffered quite badly during the pandemic. Right now, we have an opportunity to rethink them and the potential for exciting change. It is important that young people have a voice and can be helped to articulate their aspirations for the future of the High Street. spudYOUTH will be running a week-long intensive workshop for young people in Lymington during August. We welcome any young people to come and get involved and have their say about what Lymington could look like in the future.

Everyone will be welcome to drop into the sessions, ask questions and see the temporary exhibition – watch out for details. To take part in the workshops as a young person, sign up is easy via: **www.spud.org.uk/spudyouth** All workshops will take place in Lymington (venue to be confirmed) and all workshop leaders are DBS checked.

Living Room: Dementia Space



As many of you'll be aware from earlier newsletters, we have been fundraising to build a permanent space at spudWORKS for people and their families living with dementia to undertake a variety of creative activities. This is still our long-term ambition, but sadly the pandemic has made securing any capital funding very difficult. We have, therefore, decided to create a temporary outdoor space on the site. With the kind support of the Fencing Centre, Solent Solar Sails and Simon Graham Construction, we will have a fantastic covered outdoor space available for June. This space will allow us to run a series of activities for people living with dementia over the summer in a safe and welcoming outdoor venue. The space will also be available to book by other interested groups for a range of outdoor activities, set within the beautiful gardens at spudWORKS. To find out more or book the space please email: **tom@spud.org.uk**

New Forest Imaginaruim

Is there a particular place In the New Forest that sparks your imagination, brings to mind a story (real or fiction), an event, that moves you, hold close to your heart; somewhere that you return to often, in thought or in person; a special place, tree, view, atmosphere, object, sound or location from childhood; something that you take with you in your imagination wherever you go?

If so, please get in touch, as we (with artist Simon Ryder) are creating the New Forest Imaginarium: a virtual 3D world to be shown in Sway in the autumn. This immersive installation will be shaped by how the Forest appears in the imaginations of those who love it (whether living locally or further afield, urban or rural).



The Imaginarium will be an inclusive landscape of the imagination, a new way of articulating why the Forest is so important, in all its diversity. It will be a creative leap of hope and imagination in these challenging times. Taking the focus that lockdown has offered us to reconsider what we value most deeply in this world, and build upon it: a way of expressing what we intend to pass on to future generations.

<https://simonhryder.wordpress.com>